

Technical data sheet

Product features



Freezing cabinet 700 l glass door GN 2/1, stainless steel

Model	SAP Code	00012000
ENF 700 G	A group of articles - web	Refrigeration and freezer cabinets



- GN / EN size in device: GN 2/1
- Chamber volume [l]: 458
- Minimum device temperature [°C]: -24
- Maximum device temperature [°C]: -10
- Insulation thickness [mm]: 90
- Control type: Digital
- Interior lighting: Yes
- Door lock: Yes
- Automatic defrost: Yes
- HACCP: Yes
- Annual energy consumption [kWh]: 3167

SAP Code	00012000	Gross Volume [m3]	1.445
Net Width [mm]	733	Net Volume [m3]	1.328
Net Depth [mm]	867	Number of GN / EN	24
Net Height [mm]	2090	GN / EN size in device	GN 2/1
Net Weight [kg]	149.20	Minimum device temperature [°C]	-24
Power electric [kW]	0.526	Maximum device temperature [°C]	-10
Loading	230 V / 1N - 50 Hz	Refrigerant	R290
Energy class	G	Climate class	5
Chamber volume [l]	458		

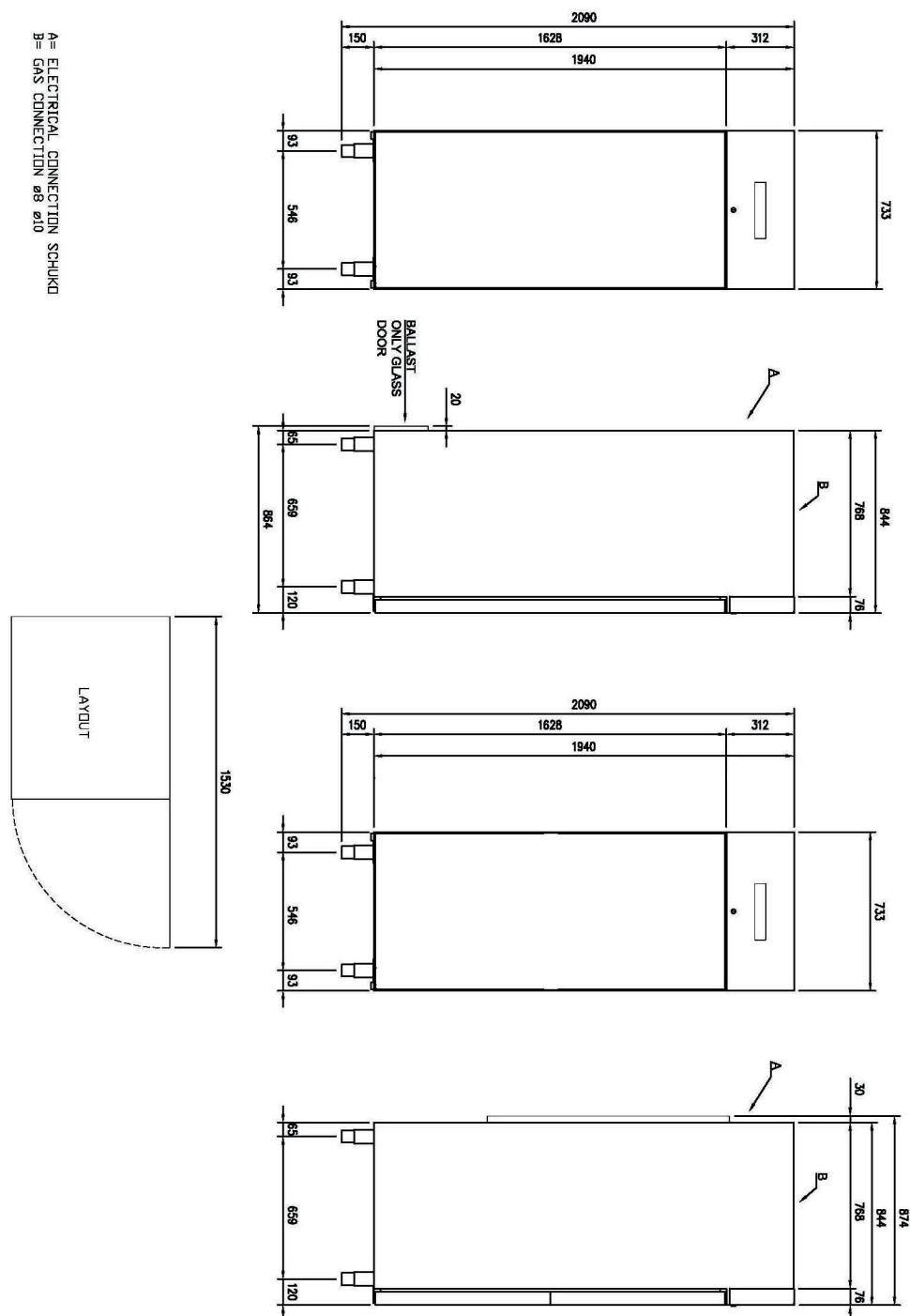
Technical data sheet

Technical drawing



Freezing cabinet 700 l glass door GN 2/1, stainless steel

Model	SAP Code	00012000
ENF 700 G	A group of articles - web	Refrigeration and freezer cabinets



Technical data sheet

Product benefits



Freezing cabinet 700 l glass door GN 2/1, stainless steel

Model	SAP Code	00012000
ENF 700 G	A group of articles - web	Refrigeration and freezer cabinets

- 1 Insulation 90mm**
 - minimal losses
 - energy saving
- 2 Two-sided opening**
 - location variability
 - greater operational efficiency
 - better kitchen ergonomics
- 3 All-stainless design**
 - corrosion resistance
 - longer service life
 - health safety
- 4 Automatic defrosting**
 - nothing needs to be watched
 - always working properly without extra operator requirements
- 5 Wheels, legs**
 - variability
 - user comfort
- 6 High energy class**
 - minimal energy loss
 - high efficiency
 - guaranteed chilled food
 - cost saving
 - hygienic safety

Technical data sheet

Technical parameters



Freezing cabinet 700 l glass door GN 2/1, stainless steel

Model	SAP Code	00012000
ENF 700 G	A group of articles - web	Refrigeration and freezer cabinets

1. SAP Code:

00012000

2. Net Width [mm]:

733

3. Net Depth [mm]:

867

4. Net Height [mm]:

2090

5. Net Weight [kg]:

149.20

6. Gross Width [mm]:

763

7. Gross depth [mm]:

873

8. Gross Height [mm]:

2170

9. Gross Weight [kg]:

164.20

10. Device type:

Electric unit

11. Power electric [kW]:

0.526

12. Loading:

230 V / 1N - 50 Hz

13. Energy class:

G

14. Refrigerant:

R290

15. Material:

AISI 304

16. Exterior color of the device:

Stainless steel

17. Max ambient temperature [°C]:

40

18. Device properties 2:

Freezing

19. GN / EN size in device:

GN 2/1

20. Number of GN / EN:

24

21. Chamber volume [l]:

458

22. Gross Volume [m3]:

1.445

23. Net Volume [m3]:

1.328

24. Adjustable feet:

Yes

25. Insulation thickness [mm]:

90

26. Number of doors:

1

27. Unit:

Yes

28. Control type:

Digital

Technical data sheet

Technical parameters



Freezing cabinet 700 l glass door GN 2/1, stainless steel

Model	SAP Code	00012000
ENF 700 G	A group of articles - web	Refrigeration and freezer cabinets

29. Door lock:

Yes

34. Maximum device temperature [°C]:

-10

30. Interior lighting:

Yes

35. Automatic defrost:

Yes

31. HACCP:

Yes

36. Number of grids:

3

32. Annual energy consumption [kWh]:

3167

37. Climate class:

5

33. Minimum device temperature [°C]:

-24

38. Cross-section of conductors CU [mm²]:

0,5